

Effect of Human Immunodeficiency Virus Type 1 (HIV-1) Subtype on Disease Progression in Persons from Rakai, Uganda, with Incident HIV-1 Infection

Noah Kiwanuka,^{1,5} Oliver Laeyendecker,^{6,7} Merlin Robb,⁹ Godfrey Kigozi,¹ Miguel Arroyo,¹⁰ Francine McCutchan,¹⁰ Leigh Anne Eller,⁹ Michael Eller,⁹ Fred Makumbi,² Deborah Bix,⁹ Fred Wabwire-Mangen,² David Serwadda,² Nelson K. Sewankambo,^{3,4} Thomas C. Quinn,^{6,7} Maria Wawer,⁸ and Ronald Gray⁸

¹Rakai Health Sciences Program, Uganda Virus Research Institute, Entebbe, and ²School of Public Health and ³Department of Medicine and ⁴Clinical Epidemiology Unit, Faculty of Medicine, Makerere University, Kampala, Uganda; ⁵Department of Epidemiology and Biostatistics, Case Western Reserve University, Cleveland, Ohio; and ⁶National Institute of Allergy and Infectious Diseases, National Institutes of Health, Bethesda, Schools of ⁷Medicine and ⁸Public Health, Johns Hopkins University, Baltimore, ⁹Henry M. Jackson Foundation, Rockville, and ¹⁰Walter Reed Army Institute of Research, Silver Spring, Maryland

(See the editorial commentary by Kuritzkes on pages 638–9.)

Background. Human immunodeficiency virus type 1 (HIV-1) subtypes differ in biological characteristics that may affect pathogenicity.

Methods. We determined the HIV-1 subtype-specific rates of disease progression among 350 HIV-1 seroconverters. Subtype, viral load, and CD4⁺ cell count were determined. Cox proportional hazards regression modeling was used to estimate adjusted hazard ratios (HRs) of progression to acquired immunodeficiency syndrome (AIDS) (defined as a CD4⁺ cell count of ≤ 250 cells/mm³) and to AIDS-associated death.

Results. A total of 59.1% of study subjects had subtype D strains, 15.1% had subtype A, 21.1% had intersubtype recombinant subtypes, 4.3% had multiple subtypes, and 0.3% had subtype C. Of the 350 subjects, 129 (37%) progressed to AIDS, and 68 (19.5%) died of AIDS. The median time to AIDS onset was shorter for persons with subtype D (6.5 years), recombinant subtypes (5.6 years), or multiple subtypes (5.8 years), compared with persons with subtype A (8.0 years; $P = .022$). Relative to subtype A, adjusted HRs of progression to AIDS were 2.13 [95% confidence interval {CI}, 1.10–4.11] for subtype D, 2.16 [95% CI, 1.05–4.45] for recombinant subtypes, and 4.40 [95% CI, 1.71–11.3] for multiple subtypes. The risk of progression to death was significantly higher for subtype D (adjusted HR, 5.65; 95% CI, 1.37–23.4), recombinant subtypes (adjusted HR, 6.70; 95% CI, 1.56–28.8), and multiple subtypes (adjusted HR, 7.67; 95% CI, 1.27–46.3), compared with subtype A.

Conclusions. HIV disease progression is affected by HIV-1 subtype. This finding may impact decisions on when to initiate antiretroviral therapy and may have implications for future trials of HIV-1 vaccines aimed at slowing disease progression.

HIV type 1 (HIV-1) exhibits a high degree of genetic diversity, which is attributable to its rapid replication cycle, the high error rate of reverse transcriptase, and the

recombination of 2 RNA genomes during the synthesis of proviral DNA [1, 2]. This diversity is responsible for HIV types, subtypes, circulating recombinant forms (CRFs), and unique recombinant forms [3–7]. Three groups of HIV-1 have been identified: the M (major) group, the O (outlier) group, and the N (novel or non-M-non-O) group. M viruses are the most common, ac-

Received 3 July 2007; accepted 25 September 2007; electronically published 11 February 2008.

Potential conflicts of interest: none reported.

The contents of this article do not necessarily reflect the position or policies of the US Government; the US Army Medical Command, Department of the Army; the Henry M. Jackson Foundation; or the Fogarty Foundation, NIH.

Presented in part: 13th Conference on Retroviruses and Opportunistic Infections, Denver, Colorado, 5–8 February 2006 (abstract 44LB.b); and 14th Conference on Retroviruses and Opportunistic Infections, Los Angeles, California, 25–8 February 2007 (abstract 307).

The Journal of Infectious Diseases 2008; 197:707–13

© 2008 by the Infectious Diseases Society of America. All rights reserved.

0022-1899/2008/19705-0015\$15.00

DOI: 10.1086/527416

Financial support: US Army Medical Research and Materiel Command, Department of the Army (cooperative agreement DAMD17-98-2-8007); Henry M. Jackson Foundation (grants 5D43TW00010 and 2 D 43 TW000010–19 from the Fogarty Foundation, National Institutes of Health [NIH]); Fogarty AIDS International Training and Research Program, Case Western Reserve University; and Division of Intramural Research, National Institute of Allergy and Infectious Diseases, NIH.

Reprints or correspondence: Dr. Noah Kiwanuka, Rakai Health Sciences Program, Uganda Virus Research Institute, PO Box 49, Entebbe, Uganda (nkiwanuka@rhsp.org).

counting for >95% of global infections [1, 2, 8]. Differences in the genetic characteristics of HIV may play a role in the dynamics of HIV infection. HIV-1 is more virulent than HIV type 2 (HIV-2) [3, 4], and group M viruses appear to have a higher replication and transmission fitness than group O or HIV-2 strains [9]. HIV-1 subtypes also differ in biological characteristics that may affect pathogenicity, such as chemokine coreceptor use, syncytium-forming properties, viral fitness, and plasma viral loads [10–13]. These differences may theoretically influence infectivity and transmissibility, the rate of disease progression, and the response to antiretroviral therapy (ART).

Studies in sub-Saharan Africa have found higher rates of disease progression among individuals infected with subtype D virus, compared with persons infected with subtype A virus [10, 14–16]. However, the populations in these studies consisted primarily of persons with prevalent HIV-1 infection of unknown duration, and viral load was not controlled for in most analyses. Additionally, HIV-1 subtype data were generated by either heteroduplex mobility assay or serologic analysis of the response to subtype-specific V3 peptides, both of which have a limited ability to identify recombinant forms of the virus. Thus, the interpretation of results from these studies is hampered by a lack of information on the interval between seroconversion and AIDS onset and by the inability to adjust for viral load, which is a strong predictor of HIV-1 disease progression [17–19]. Also, the role of intersubtype-recombinant strains (hereafter, “recombinant subtypes”) and multiple HIV strains on disease progression was not assessed. To address these issues, we assessed the time between infection onset and progression to a CD4⁺ cell count of ≤ 250 cells/mm³ and to AIDS-associated death among persons with seroincident infection due to subtype A or D strains, recombinant subtypes, or multiple subtypes in a general population cohort in the Rakai district of Uganda.

SUBJECTS, MATERIALS, AND METHODS

Study population. Since 1994, the Rakai Health Sciences Program (RHSP) has conducted annual surveillance in a community-based cohort of adults aged 15–49 years. Participants who provided written informed consent were enrolled in the study. At each survey visit, a standardized questionnaire on sociodemographic characteristics, sexual behaviors, and health status was administered in private by same-sex interviewers, and venous blood was collected for HIV-1 testing [20]. All HIV-1 seroconverters identified during the annual cohort surveys between 1997 and 2002 were enrolled into a supplementary investigation known as the Molecular Epidemiological Research (MER) study. The MER study was conducted during 1999–2004, before ART became available in Rakai. MER study participants were seen 1, 3, 6, and 12 months after seroconversion was detected and annually thereafter. At each visit, a standardized questionnaire was administered, and a clinical exami-

nation was performed. Venous blood was collected for HIV-1 subtyping, viral load quantification, and determination of the CD4⁺ cell count. Participants were provided with free voluntary HIV counseling and testing, condoms, and treatment for sexually transmitted infections and opportunistic infections.

Enrollment and follow-up examinations were conducted at mobile clinics (referred to as “hubs”) in the communities and at the RHSP main clinic. Participants who did not return for follow-up examination were actively followed up in their homes. In case of death, a structured verbal autopsy questionnaire was administered to the person closest to the deceased individual, to obtain information on date and cause of death. Verbal autopsy forms were reviewed by a physician, who determined whether death was due to AIDS or to an AIDS-related illness. At the end of the MER study (in 2002), participant follow up continued via the annual community cohort surveys, and beginning in June 2004, eligible participants received free treatment with trimethoprim-sulfamethoxazole and ART, funded by the President’s Emergency Plan for AIDS Relief. Institutional review board approvals were obtained from the Uganda Virus Research Institute’s Science and Ethics Committee, the Uganda National Council for Science and Technology, and collaborating US institutions (Walter Reed Army Institute of Research [Silver Spring, MD], Columbia University [New York, NY], and Johns Hopkins University [Baltimore, MD]).

Laboratory analysis. All participants had 2 serum specimens tested simultaneously for HIV-1 by an enzyme immunoassay [EIA] (Vironostika HIV-1 [Organon Teknika and Cambridge Biotech]). Western blot analysis (HIV-1 Western Blot [bioMérieux-Vitek]) was used to determine the serostatus of specimens with discordant results and to confirm the positive serostatus of specimens with concordant positive results. The plasma HIV-1 load was determined using a reverse-transcriptase polymerase chain reaction (PCR) assay (Amplicor HIV-1 Monitor, version 1.5 [Roche Molecular Systems]) that has been validated for all group M subtypes of HIV-1, including subtypes A and D, which predominate in Uganda. The standard reverse-transcriptase PCR, which has a lower detection limit of 400 copies/mL, was used. CD4⁺ cell counts were determined using the BD FACS-Calibur system through 2003, after which the BD FACS-Count system was used. Testing was done in accordance with the manufacturers’ protocols.

HIV-1 subtypes were assigned on the basis of findings of the MHA_{acd} assay, as described elsewhere [21, 22]. In brief, viral RNA was extracted from plasma, using the MagNA pure total nucleic acid robotic extraction procedure (Roche Diagnostics). RNA at 5 regions of the HIV-1 genome (*gag*, *pol*, *vpu*, *env*, and *gp41*) was amplified by real-time PCR. A second real-time PCR that used a Taqman probe specific for subtypes A, C, or D was performed on each of the first-round products. An HIV-1 subtype was assigned for each region on the basis of the reactivity of the probes. Samples with identical reactivity for each region of

the viral genome were considered to consist of a pure subtype, those with reactivity to different probes in different regions were considered to consist of a recombinant subtype, and those that had a region of the virus where multiple subtype-specific probes reacted were considered to consist of multiple subtypes.

Statistical analysis. Enrollment characteristics were compared for persons infected with different HIV-1 subtypes. Analysis of variance was used for continuous variables, and χ^2 analysis and the Fisher exact test were used for categorical variables.

Time-to-event analyses were used to assess the effect of HIV-1 subtype on disease progression following infection. The time of HIV infection was estimated as the midpoint between the last seronegative and the first seropositive survey visits. HIV-1 subtype was the main exposure variable, and progression to AIDS (defined as a CD4⁺ cell count of ≤ 250 cells/mm³) and death due to AIDS were the study end points. A CD4⁺ cell count of ≤ 250 cells/mm³ was used to define AIDS onset, because this is the level at which persons become eligible for ART in the Rakai ART program. Persons who initiated ART were censored at their last pre-ART visit. The time of AIDS onset was estimated as the midpoint between the last visit with a CD4⁺ cell count of > 250 cells/mm³ and the first visit with a CD4⁺ cell count of ≤ 250 cells/mm³. The time to achieving a CD4⁺ cell count of ≤ 250 cells/mm³ was calculated as the interval between the estimated date of infection and the estimated date when the CD4⁺ cell count decreased to ≤ 250 cells/mm³. For 22 participants who did not have CD4⁺ cell count data before death, the date of death was used as the estimated date of AIDS onset. The time to AIDS-associated death was calculated as the interval between the estimated date of infection and the date of death. Deaths from non-AIDS-related causes (e.g., traffic accidents) were censored as nonevents at the time of death. Viral loads were log₁₀ transformed for analysis.

Multivariable Cox proportional hazards regression analysis was used to estimate adjusted hazard ratios (HRs) and 95% confidence intervals (CIs) of progression to AIDS and to death due to HIV-1 subtype D, recombinant HIV-1 subtypes, and multiple HIV-1 subtypes relative to HIV-1 subtype A. To account for multiple comparisons between subtypes, the type 1 error (α) was adjusted using Holm's procedure [23]. This is a step-up procedure whereby individual *P* values are ranked in increasing order and the adjusted α for a given hypothesis [$H_{O(i)}$] is estimated as $P(i) < \alpha / (G - i + 1)$, where *G* is the number of related hypotheses being tested. For the 3 comparisons of non-subtype A strains (i.e., subtype D, recombinant subtypes, and multiple subtypes) with subtype A, the adjusted α were 0.017 (0.05/3), 0.025 (0.05/2), and 0.05 (0.05/1), respectively. Differences in rates of progression between non-subtype A strains were assessed by estimating HRs for the following comparisons, using the same adjusted α described above: recombinant subtypes versus subtype D strains, multiple subtypes versus subtype D strains, and multiple subtypes versus recombinant subtypes.

The proportional hazards assumption was tested by graphical methods and by goodness-of-fit analysis, using Schoenfeld residuals. In univariate analyses, a *P* value of $\leq .10$ and biological plausibility were used to select covariates for multivariable models. Analyses were done using Stata, version 8.0 (Stata).

RESULTS

Population characteristics. Of the 491 HIV-1 seroconvertors from the cohort, 488 (99.4%) were enrolled in MER, and 3 (0.6%) refused enrollment. HIV subtype data were available for 350 enrolled seroconvertors (71.7%); 207 (59.1%) had subtype D, 53 (15.1%) had subtype A, 74 (21.1%) had a recombinant subtype, 15 (4.3%) had multiple subtypes, and 1 person (0.3%) had subtype C. The single subtype C case was eliminated from further analyses. All recombinant subtypes involved subtypes A and D. Persons with subtype data were older than those for whom subtype data were not available (mean age, 29.3 vs. 26.7 years; *P* = .002) but did not differ with respect to other socio-demographic characteristics. Among the 349 persons with incident HIV-1 infection included in analyses of disease progression, 60% were females, and 76% were aged < 35 years. Twenty-two participants (6.3%) did not have CD4⁺ cell data recorded before death; 14 were infected with subtype D, and 8 were infected with recombinant subtypes.

Table 1 shows demographic and clinical characteristics of participants, according to HIV-1 subtype. Baseline plasma viral load, sex, and age at enrollment did not differ with respect to HIV-1 subtype. However, the median age at enrollment was 29 years (interquartile range [IQR], 25–35 years) among men, compared with 27 years (IQR, 22–33 years) among women (*P* $< .02$), and the mean viral load among men was 4.74 log₁₀ copies/mL, compared with 4.53 log₁₀ copies/mL among women (*P* = .007). Overall, 129 individuals (37.0%) achieved CD4⁺ cell counts of ≤ 250 cells/mm³, 74 (21.2%) died of any cause, 68 (19.5%) died of AIDS-related causes, and 14 (4.0%) were lost to follow-up. A significantly lower percentage of persons with subtype A (18.9%) progressed to a CD4⁺ cell count of ≤ 250 cells/mm³, compared with persons with subtype D (39.6%), recombinant subtypes (39.2%), or multiple subtypes (53.3%) (*P* = .03). Subtype A was also associated with a significantly lower proportion of AIDS-associated deaths, compared with other non-A subtypes combined (*P* = .004). Mortality due to AIDS was higher among men (24.1%) than among women (16.3%); this difference was not statistically significant (*P* = .07) but is epidemiologically important. Persons lost to follow-up did not differ from those who remained under observation with regard to sex (*P* = .42), age (*P* = .08), HIV-1 subtype (*P* = .77), and plasma viral load (*P* = .85). Seventy-five persons (21.5%) progressed to World Health Organization (WHO) clinical stage 3 or 4 disease, of whom 22 (29.3%) progressed to WHO clinical stage 3 or 4 disease before their CD4⁺

Table 1. Characteristics of study participants overall and by infecting HIV-1 subtype, Rakai, Uganda.

Characteristic	HIV-1 subtype, no. (%) of subjects					P
	Overall (n = 349)	A (n = 53)	D (n = 207)	R (n = 74)	M (n = 15)	
Age at enrollment						
<25 years	115 (32.9)	20 (37.7)	62 (29.9)	25 (33.8)	8 (53.3)	
25–34 years	150 (43.0)	22 (41.5)	96 (46.4)	30 (40.5)	2 (13.3)	
≥35 years	84 (24.1)	11 (20.8)	49 (23.7)	19 (25.7)	5 (33.3)	0.23
Sex						
Female	208 (59.6)	33 (62.3)	127 (61.3)	40 (54.1)	8 (53.3)	
Male	141 (40.4)	20 (37.7)	80 (38.7)	34 (45.9)	7 (46.7)	0.64
Baseline HIV-1 load, median (IQR), log₁₀ copies/mL						
	4.67 (4.14–5.18)	4.57 (3.93–5.33)	4.77 (4.14–5.20)	4.60 (4.29–5.10)	4.81 (4.08–5.27)	0.92
Progression to AIDS^a						
	129 (37.0)	10 (18.9)	82 (39.6)	29 (39.2)	8 (53.3)	0.02
AIDS mortality						
	68 (19.5)	2 (3.8)	44 (21.3)	19 (25.7)	3 (20.0)	0.004

NOTE. IQR, interquartile range; M, multiple subtypes; R, intersubtype-recombinant strains.

^a Defined as achievement of a CD4⁺ cell count of ≤250 cells/mm³.

cell count decreased to <250 cells/mm³. However, for the remaining 53 subjects whose CD4⁺ cell count decreased to ≤250 cells/mm³ before the onset of clinical AIDS, the median time between reaching a CD4⁺ cell count of ≤250 cells/mm³ to onset of clinical AIDS was 3.6 years.

Time to onset of AIDS. The median times between the estimated onset of infection and the onset of AIDS was 6.48 years (IQR, 4.50–8.05) overall, 6.49 years (IQR, 4.15–7.85 years) for subtype D, 5.57 years (IQR, 4.51–7.46 years) for recombinant subtypes, 5.80 years (IQR, 3.94–6.46 years) for multiple subtypes, and 8.05 years for subtype A. Over the observed range of the data, the probability of progressing to AIDS did not reach 75% for infection with subtype A; hence, the upper quartile for this group could not be estimated. In sensitivity analyses excluding the 22 participants with no CD4⁺ cell data recorded before death, the median times between onset of infection and the onset of AIDS were 6.68 years (IQR, 4.60–8.20 years) overall, 6.54 years (IQR, 4.57–9.02 years) for subtype D, 6.98 years (IQR, 4.53–7.46 years) for recombinant subtypes, 5.80 years (IQR, 3.94–6.45 years) for multiple subtypes, and 8.05 years for subtype A. Exclusion of persons who were lost to follow-up and the 22 persons with no CD4⁺ cell count recorded before death only changed the median time to onset of AIDS for persons with multiple subtypes to 4.36 years (IQR, 2.85–7.18 years). Figure 1 shows the Kaplan-Meier survival curves from the estimated time of infection to AIDS onset, according to HIV-1 subtype. Infection with subtype A was associated with a longer time to progression to a CD4⁺ cell count of ≤250 cells/mm³, compared with infection with the other subtypes (*P* = .022, by the log-rank test).

Table 2 shows HRs for the association between HIV-1 subtypes and progression to a CD4⁺ cell count of ≤250 cells/mm³. Covariates included in the multivariable model were age, sex, educational status, baseline body mass index, genital ulcer disease, plasma viral load, and HIV-1 subtype. Covariates that did

not improve model prediction were dropped, but sex and age were retained in the final model because viral load was higher in men than in women, men were older than women, and age of infection is known to be inversely associated with survival. Each covariate in the multivariable model met the proportional hazards assumption (*P* = .45 for the global test, using Schoenfeld residuals). After controlling for viral load, age, and sex and adjusting for multiple comparisons, we found that infection with multiple subtypes (adjusted HR, 4.40; 95% CI, 1.71–11.3; *P* < .002), subtype D (adjusted HR, 2.13; 95% CI, 1.10–4.11; *P* < .024), and recombinant subtypes (adjusted HR, 2.16; 95% CI, 1.05–4.45; *P* < .036) resulted in significantly faster progression to AIDS than did infection with subtype A. Infection with multiple subtypes was associated with faster progression to AIDS, compared with recombinant subtypes (adjusted HR, 3.23; 95% CI, 1.32–7.95; *P* = .01). The hazard of progression to AIDS

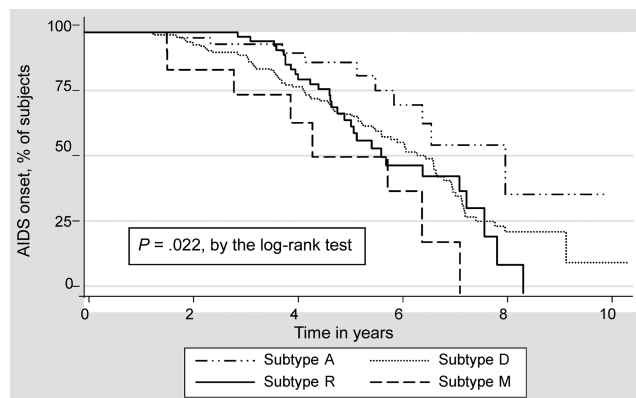


Figure 1. Kaplan-Meier estimates of the time from onset of HIV-1 infection to onset of AIDS (defined as a CD4⁺ cell count of ≤250 cells/mm³), by HIV-1 subtype, in a population from Rakai, Uganda. M, multiple subtypes; R, intersubtype-recombinant strains.

Table 2. Hazard ratios (HRs) for progression from HIV-1 seroconversion to onset of AIDS, Rakai, Uganda.

Characteristic	Unadjusted analysis		Adjusted analysis	
	HR (95% CI)	P	HR (95% CI)	P
Age, per year increase	1.02 (1.00–1.04)	.12	1.01 (1.00–1.03)	.42
Sex				
Female	1			
Male	1.06 (0.74–1.50)	.75	0.95 (0.66–1.37)	.79
HIV-1 load, per 10 ¹⁰ increase	2.32 (1.74–3.04)	<.001	2.28 (1.72–3.01)	<.001
HIV-1 subtype				
A	1	1		
M	4.05 (1.59–10.3)	.003	4.40 (1.71–11.3)	.002 ^a
D	2.19 (1.13–4.22)	.020	2.13 (1.10–4.11)	.024 ^a
R	2.25 (1.09–4.62)	.028	2.16 (1.05–4.45)	.036 ^a

NOTE. Onset of AIDS is defined as achievement of a CD4⁺ cell count of ≤ 250 cells/mm³. M, multiple subtypes; R, intersubtype-recombinant strains.

^a Results were significant after adjusting for multiple comparisons.

was higher for multiple-subtype infection than for subtype D infection, but this was of borderline significance (adjusted HR, 2.06; 95% CI, 0.97–4.38; $P = .06$). There was no difference in progression between infection with recombinant subtypes and infection with subtype D (adjusted HR, 1.01; 95% CI, 0.66–1.55; $P = .92$). A 1- \log_{10} increase in plasma viral load was associated with a significantly increased adjusted HR of progression to AIDS (adjusted HR, 2.28; 95% CI, 1.72–3.01; $P < .001$).

Time to death. Over the observed range of the data, the probability of death did not reach 50%, so the median time from infection onset to death could not be estimated. Overall, there was a 25% probability of death within 5.80 years after HIV infection was acquired. A mortality rate of 25% occurred within 5.54 years after infection with subtype D, 5.30 years for recombinant subtypes, and 4.34 years for multiple subtypes. The probability of death did not reach 25% for infection with subtype A, indicating a longer duration of survival, compared with infection due to non-A subtypes. Figure 2 shows the Kaplan-Meier survival curves of time from infection to death due to AIDS. Infection with subtype A was associated with a significantly longer survival duration, compared with infection due to non-A subtypes ($P = .022$, by the log-rank test).

Table 3 shows HRs for the effect of HIV-1 subtype on progression to death. In univariate analyses, viral load, HIV-1 subtype, and age were statistically significant predictors of progression to death, but in multivariable analyses, only viral load and HIV-1 subtype remained significant. Relative to subtype A, progression to death was significantly higher for infection with subtype D (adjusted HR, 5.65; 95% CI, 1.37–23.4; $P = .017$), recombinant subtypes (adjusted HR, 6.70; 95% CI, 1.56–28.8; $P = .011$), and multiple subtypes (adjusted HR, 7.67; 95% CI, 1.27–46.3; $P = .026$). A 1- \log_{10} increase in viral load was associated with an adjusted hazard of death of 1.98 (95% CI, 1.35–2.90; $P < .001$). The proportional hazards assumption was met by all covariates

in the multivariate model ($P = .99$, by the Schoenfeld residuals test). No differences in progression to death were observed between recombinant subtypes and subtype D (adjusted HR, 1.19; 95% CI, 0.69–2.04; $P = .54$), between multiple subtypes and subtype D (adjusted HR, 1.34; 95% CI, 0.41–4.39; $P = .63$), and between multiple subtypes and recombinant subtypes (adjusted HR, 1.32; 95% CI, 0.37–4.66; $P = .67$).

DISCUSSION

We found that persons infected with subtype D, recombinant subtypes, and multiple subtypes had faster progression from infection onset to AIDS (defined as a CD4⁺ cell count of ≤ 250 cells/mm³) and to death, compared with persons infected with subtype A. We also found that infection with multiple subtypes was associated with faster progression to AIDS, compared with

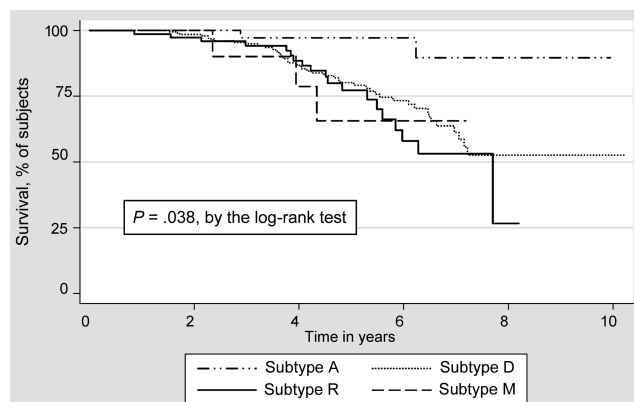


Figure 2. Kaplan-Meier estimates of the time from onset of HIV-1 infection to AIDS-associated death, by HIV-1 subtype, in a population from Rakai, Uganda. M, multiple subtypes; R, intersubtype-recombinant strains.

Table 3. Hazard ratios (HRs) for progression from HIV-1 seroconversion to AIDS-associated death, Rakai, Uganda.

Characteristic	Unadjusted analysis		Adjusted analysis	
	HR (95% CI)	<i>P</i>	HR (95% CI)	<i>P</i>
Age, per year increase	1.03 (1.00–1.05)	.043	1.02 (0.99–1.04)	.21
Sex				
Female	1		1	
Male	1.43 (0.89–2.31)	.14	1.28 (0.79–2.09)	.31
HIV-1 load, per 10 ¹⁰ increase	2.09 (1.44–3.02)	<.001	1.98 (1.35–2.90)	<.001
HIV-1 subtype				
A	1		1	
R	6.73 (1.56–28.9)	.010	6.70 (1.56–28.8)	.011 ^a
D	5.43 (1.32–22.4)	.019	5.65 (1.37–23.4)	.017 ^a
M	6.67 (1.11–40.0)	.038	7.67 (1.27–46.3)	.026 ^a

NOTE. M, multiple subtypes; R, intersubtype-recombinant strains.

^a Results were significant after adjusting for multiple comparisons.

infection with recombinant subtypes, but no differences in progression to AIDS were observed between multiple subtypes and subtype D and between recombinant subtypes and subtype D. The observed differences in rates of disease progression may partly be explained by subtype differences in coreceptor tropism. In the course of HIV-1 infection, the emergence of CXCR4 (X4) tropic viruses is associated with a more rapid decrease in the CD4⁺ cell count. Subtype D has been shown to have a higher frequency of syncytium formation and X4 use, compared with other subtypes [11, 13, 24].

The finding of faster progression for subtype D relative to A in this study supports findings from previous studies that included predominantly HIV-1-seroprevalent individuals with unknown durations of infection. Three previous Ugandan studies and 1 study involving pregnant women in Tanzania found faster progression for subtype D, compared with subtype A [10, 14, 15, 25]. In a study of female sex workers with known durations of infection in Dakar, Senegal, progression to AIDS was also faster among women infected with non-A subtypes, relative to those infected with subtype A [26]. The finding of rapid progression in persons infected with recombinant subtypes or with multiple subtypes is novel, and in this study we found that infection with multiple subtypes was associated with faster disease progression, compared with infection with a single subtype. These findings suggest that infection with subtype A is less aggressive than infection with non-A subtypes. This has implications for future trials of HIV-1 vaccines aimed at slowing disease progression [27], in which it will be necessary to assess subtype-specific responses.

We found an overall median time from infection to AIDS of 6.5 years in Rakai, which is shorter than the 9.4-year duration estimated in the neighboring Masaka district [28] and in studies from industrialized countries. The difference between estimates from Rakai and Masaka may be attributable to differences in the

relative prevalence of subtype A, which is associated with slower disease progression. In Masaka, the frequency of subtype A was 36%–40% [14, 15], compared with 15% in Rakai [29]. Furthermore, the onset of AIDS in the Masaka study was defined clinically as WHO clinical stage 3 and 4 disease. However, a decrease in the CD4⁺ cell count precedes the onset of symptoms or signs of AIDS, so use of clinical staging is likely to overestimate the time from infection onset to AIDS onset. In this study, the median time from achievement of a CD4⁺ cell count of ≤ 250 cells/mm³ to clinical AIDS was 3.6 years, implying that estimation of AIDS-free survival by use of clinical AIDS as an end point in Rakai would yield results similar to those from Masaka and industrialized countries. We believe that CD4⁺ cell counts are more appropriate for estimating the time from infection to onset of immunodeficiency requiring ART.

Over the observed range of data in our study, the probability of death did not reach 50%, so the median time from HIV infection to death could not be estimated. Similar findings were observed in another study from Masaka, where median survival times could not be estimated over 6 years of follow up [14]. We observed a large sample of HIV-1 seroconvertors with a known time of HIV infection in a community-based population cohort, so we believe that these results are representative of rural Uganda. A study of subtype E infections in Thailand estimated a median time from infection to death of 7.7 years (unpublished data), which is compatible with survival times for subtype D and recombinant subtypes in the present study (figure 1). In this study, baseline viral load was a strong predictor of progression to AIDS and to death, but age and sex did not significantly predict disease progression.

This study is not without limitations. First, information about dates and causes of death was obtained by use of verbal autopsy, since medical certification of death does not occur in these rural communities. However, any biases caused by inaccurate dates

and assignment of causes of death would be expected to be non-differential across HIV subtypes, and misclassification, if it occurred, is likely to have biased the observed results towards the null. Second, use of the date of death as the date of AIDS onset for the 22 persons for whom CD4⁺ cell counts were not measured before death could potentially result in overestimation of their AIDS-free survival. We believe this did not affect our overall findings, since 14 of these participants had subtype D and 8 had recombinant subtypes, both of which led to faster disease progression to AIDS, compared with subtype A. Furthermore, a sensitivity analysis excluding these 22 persons showed an increase in the median time to AIDS overall and for subtype D and recombinant subtypes. Finally, we did not study the role of host genetics on HIV disease progression, yet certain genes (*HLA-B* and *HLA-C*) are associated with HIV viral set point and disease progression [30].

In conclusion, disease progression is faster with subtype D and with recombinant subtypes or multiple subtypes incorporating subtype D than with subtype A. Determination of HIV-1 subtype may be important in trials of HIV vaccines aimed at slowing disease progression and in the management of HIV-infected individuals, particularly with regard to deciding the CD4⁺ cell count at which to initiate ART.

Acknowledgments

We are very grateful to the study participants, the staff of Rakai Health Sciences Program, and Dr. Chris Whalen, Director, Fogarty AIDS International Training and Research Program at Case Western Reserve University (Cleveland, OH), for their contribution to this work.

References

1. Peeters M. The genetic variability of HIV-1 and its implications. *Transfus Clin Biol* **2001**; 8:222–5.
2. Peeters M. Recombinant HIV sequences: their role in globe epidemic. In: HIV sequence database. Available at: <http://www.hiv.lanl.gov/content/immunology/pdf/2000/1/Peeters.pdf>. Accessed 18 January 2008.
3. Kanki PJ, Travers KU, MBoup S, et al. Slower heterosexual spread of HIV-2 than HIV-1. *Lancet* **1994**; 343:943–6.
4. Marlink R, Kanki P, Thior I, et al. Reduced rate of disease development after HIV-2 infection as compared to HIV-1. *Science* **1994**; 265:1587–90.
5. Alaeus A. Significance of HIV-1 genetic subtypes. *Scand J Infect Dis* **2000**; 32:455–63.
6. Gao F, Yue L, Robertson DL, et al. Genetic diversity of human immunodeficiency virus type 2: evidence for distinct sequence subtypes with differences in virus biology. *J Virol* **1994**; 68:7433–47.
7. McCutchan FE. Understanding the genetic diversity of HIV-1. *AIDS* **2000**; 14(Suppl 3):S31–44.
8. Simon F, Maucle P, Roques P, et al. Identification of a new human immunodeficiency virus type 1 distinct from group M and group O. *Nat Med* **1998**; 4:1032–7.
9. Arien KK, Abraha A, Quinones-Mateu ME, Kestens L, Vanham G, Arts EJ. The replicative fitness of primary human immunodeficiency virus type 1 (HIV-1) group M, HIV-1 group O, and HIV-2 isolates. *J Virol* **2005**; 79:8979–90.

10. Kaleebu P, French N, Mahe C, et al. Effect of human immunodeficiency virus (HIV) type 1 envelope subtypes A and D on disease progression in a large cohort of HIV-1-positive persons in Uganda. *J Infect Dis* **2002**; 185:1244–50.
11. Tscherning C, Alaeus A, Fredriksson R, et al. Differences in chemokine coreceptor usage between genetic subtypes of HIV-1. *Virology* **1998**; 241:181–8.
12. De WF, Hogervorst E, Goudsmit J, et al. Syncytium-inducing and non-syncytium-inducing capacity of human immunodeficiency virus type 1 subtypes other than B: phenotypic and genotypic characteristics. *WHO Network for HIV Isolation and Characterization. AIDS Res Hum Retroviruses* **1994**; 10:1387–400.
13. Kaleebu P, Nankya IL, Yirell DL, et al. Relation between chemokine receptor use, disease stage, and HIV-1 subtypes A and D: results from a rural Ugandan cohort. *J Acquir Immune Defic Syndr* **2007**; 45:28–33.
14. Kaleebu P, Ross A, Morgan D, et al. Relationship between HIV-1 Env subtypes A and D and disease progression in a rural Ugandan cohort. *AIDS* **2001**; 15:293–9.
15. Senkaali D, Muwonge R, Morgan D, Yirell D, Whitworth J, Kaleebu P. The relationship between HIV type 1 disease progression and V3 serotype in a rural Ugandan cohort. *AIDS Res Hum Retroviruses* **2004**; 20:932–7.
16. Baeten JM, Chohan B, Lavreys L, et al. HIV-1 subtype d infection is associated with faster disease progression than subtype A in spite of similar plasma HIV-1 loads. *J Infect Dis* **2007**; 195:1177–80.
17. Gray RH, Wawer MJ, Brookmeyer R, et al. Probability of HIV-1 transmission per coital act in monogamous, heterosexual, HIV-1-discordant couples in Rakai, Uganda. *Lancet* **2001**; 357:1149–53.
18. O'Shea S, Newell ML, Dunn DT, et al. Maternal viral load, CD4 cell count and vertical transmission of HIV-1. *J Med Virol* **1998**; 54:113–7.
19. Sterling TR, Vlahov D, Astemborski J, Hoover DR, Margolick JB, Quinn TC. Initial plasma HIV-1 RNA levels and progression to AIDS in women and men. *N Engl J Med* **2001**; 344:720–5.
20. Kiwanuka N, Robb M, Kigozi G, et al. Knowledge about vaccines and willingness to participate in preventive HIV vaccine trials: a population-based study, Rakai, Uganda. *J Acquir Immune Defic Syndr* **2004**; 36:721–5.
21. Arroyo MA, Hoelscher M, Sanders-Buell E, et al. HIV type 1 subtypes among blood donors in the Mbeya region of southwest Tanzania. *AIDS Res Hum Retroviruses* **2004**; 20:895–901.
22. Hoelscher M, Dowling WE, Sanders-Buell E, et al. Detection of HIV-1 subtypes, recombinants, and dual infections in east Africa by a multi-region hybridization assay. *AIDS* **2002**; 16:2055–64.
23. Holm S. A simple sequentially rejective multiple test procedure. *Scand J Stat* **1979**; 6:65–70.
24. Laeyendecker O, Li X, Arroyo MA, et al. The effect of HIV subtype on rapid disease progression in Rakai [abstract 44LB]. In: 13th Conference on Retroviruses and Opportunistic Infections (Denver, CO). **2006**.
25. Vasan A, Renjifo B, Hertzmark E, et al. Different rates of disease progression of HIV type 1 infection in Tanzania based on infecting subtype. *Clin Infect Dis* **2006**; 42:843–52.
26. Kanki PJ, Hamel DJ, Sankale JL, et al. Human immunodeficiency virus type 1 subtypes differ in disease progression. *J Infect Dis* **1999**; 179:68–73.
27. Johnston MI, Fauci AS. An HIV vaccine—evolving concepts. *N Engl J Med* **2007**; 356:2073–81.
28. Morgan D, Mahe C, Mayanja B, Okongo JM, Lubega R, Whitworth JA. HIV-1 infection in rural Africa: is there a difference in median time to AIDS and survival compared with that in industrialized countries? *AIDS* **2002**; 16:597–603.
29. Harris ME, Serwadda D, Sewankambo N, et al. Among 46 near full length HIV type 1 genome sequences from Rakai District, Uganda, subtype D and AD recombinants predominate. *AIDS Res Hum Retroviruses* **2002**; 18:1281–90.
30. Fellay J, Shianna KV, Ge D, et al. A whole-genome association study of major determinants for host control of HIV-1. *Science* **2007**; 317:944–7.

Copyright of Journal of Infectious Diseases is the property of Infectious Diseases Society of America and its content may not be copied or emailed to multiple sites or posted to a listserv without the copyright holder's express written permission. However, users may print, download, or email articles for individual use.